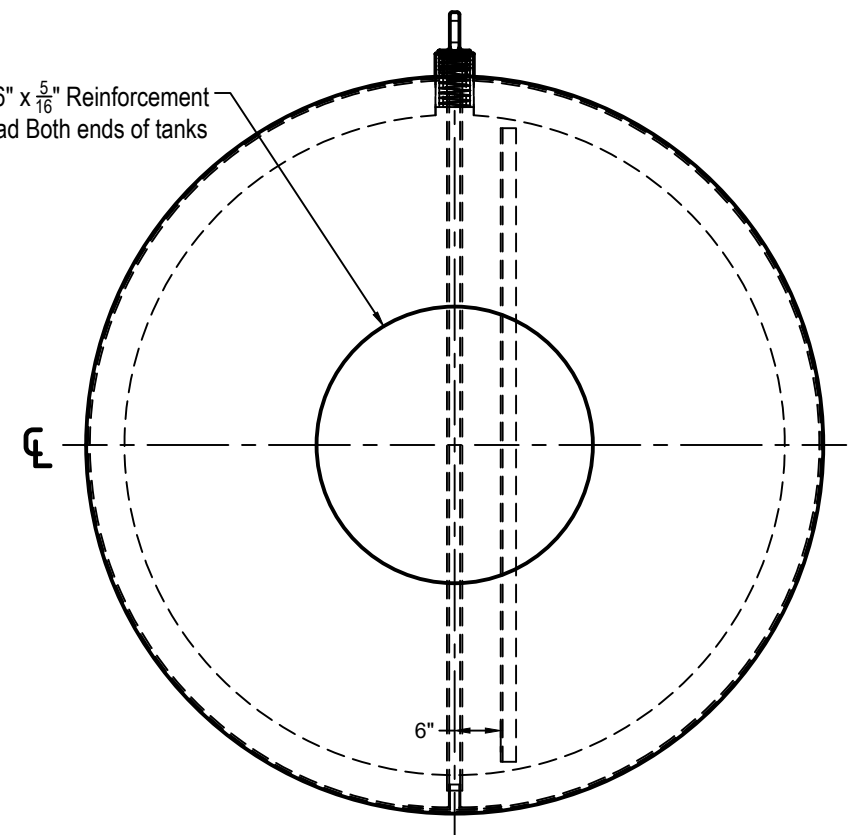
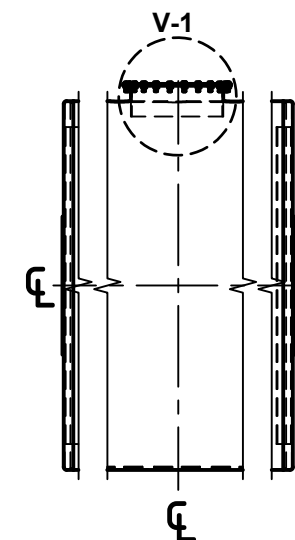


Standard Fitting Layout

36" x $\frac{5}{16}$ " Reinforcement
pad Both ends of tanks

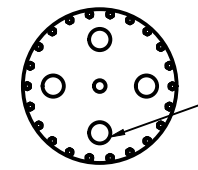


LEFT SIDE



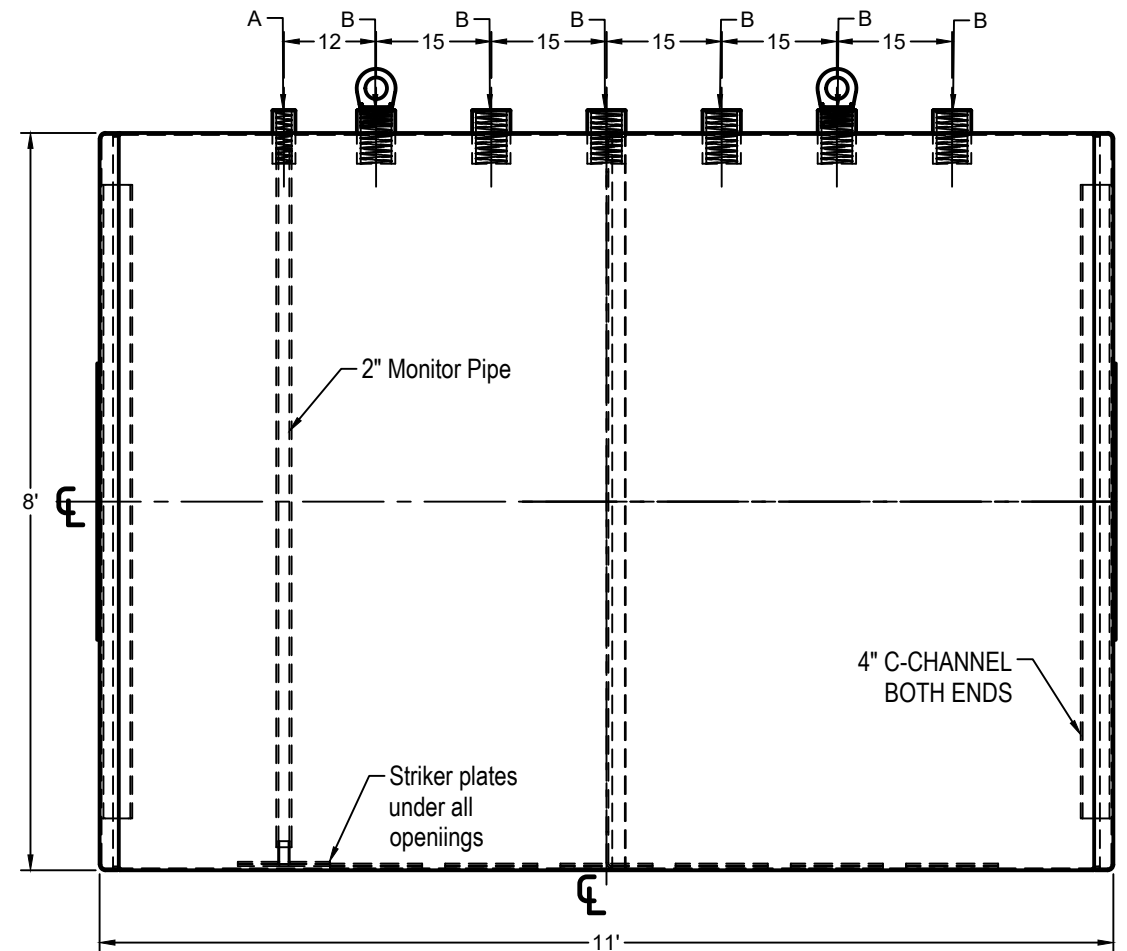
24"-30"-36" Optional Manhole with or with out fittings
42" SW Collar Optional

42" / 48"	SW (Single Wall)	Collar optional
42" / 48"	Square	Colar optional



TOP VIEW V-1

4" Coupling Flat (4)



FRONT VIEW

INSIDE DIMENTIONS		MATERIALS THICKNESS	
TANK LENGHT	11'	SHELL	1/4"
TANK DIAMETER	8'	HEADS	1/4"
A	3" Coupling W/ 2"Dialectic Bushing		Primary
B	5" Coupling W/ 4"Dialectic Bushing		Primary
C	4" Threaded Lifting Lug		Primary
CUSTOMER: HUGHES TANK COMPANY			
PROJECT: 4K 96IN PERMATANK			
CAPACITY:		4,136 Gallons	WEIGHT: 4,525 Lbs



NOTES:
A. Design Pressure: Atmosferic.
B. Design Temperature: Ambient.
C. Exterior: Min. 100 mils FBG jacketed dual-wall Permatank®.
D. Seal welded striker plates under all openings.
E. All fittings to be protected for shipment.

DESIGN:
Fabricated per UL 58 specifications single wall construction.
• Air test are no less than 3 PSI and no more than 5 PSI.
• Primary tank to be tested alone. Secondary tank to be pressure tested with primary tank. This shall be accomplished by bleeding air from the primary tank to the secondary tank.

CUSTOMER APPROVAL
SIGNATURE: _____
DATE: _____
APROVED: Bobby Hughes
CHECKED: Bode Draper
DRAWN: Roosevelt Caceres