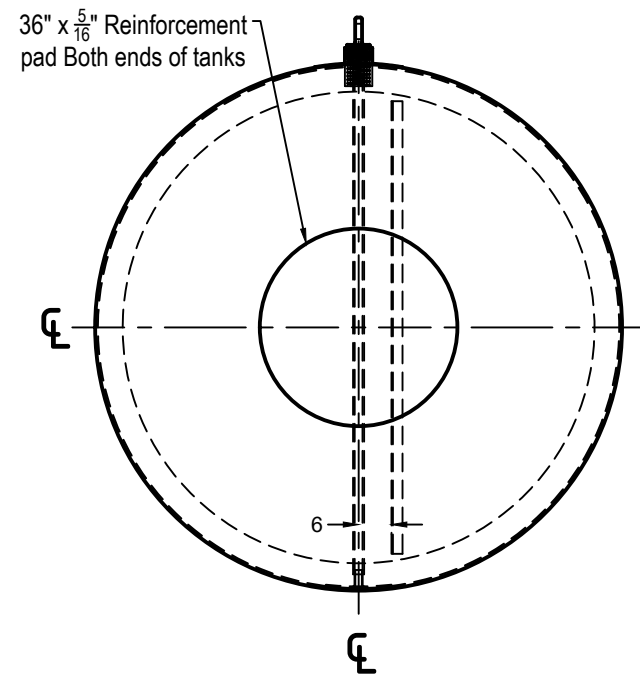
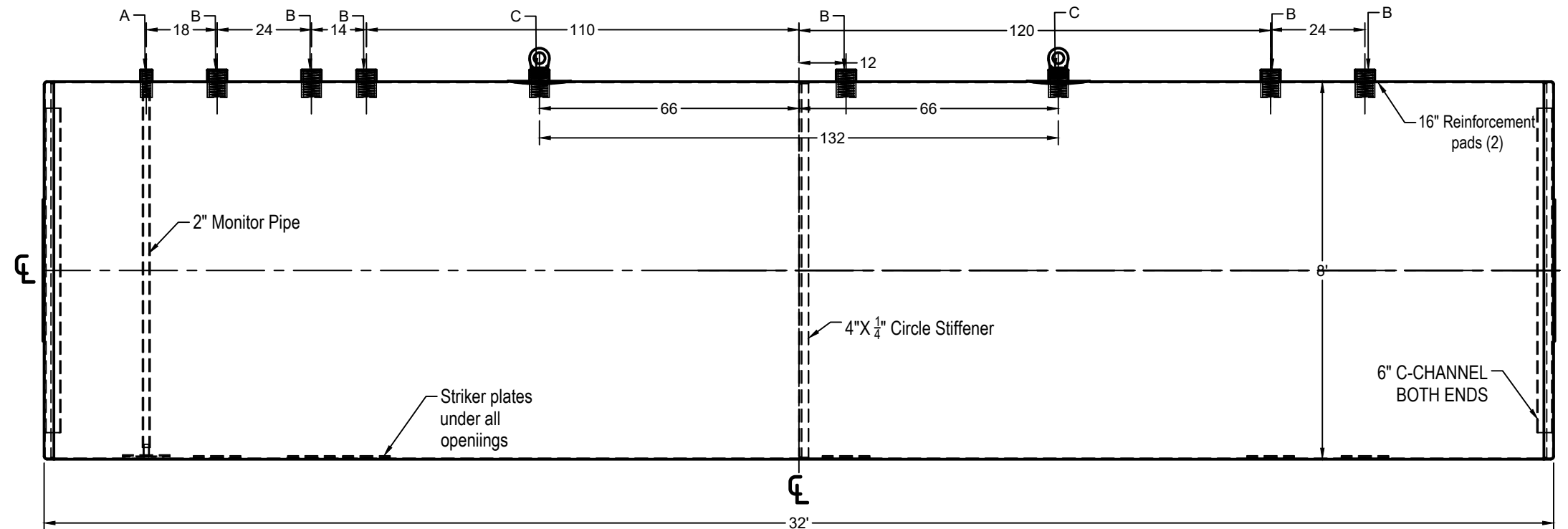


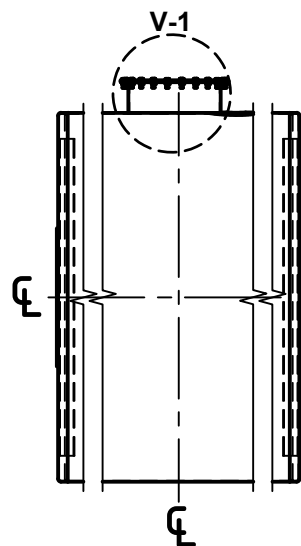
Standard Fitting Layout



LEFT SIDE

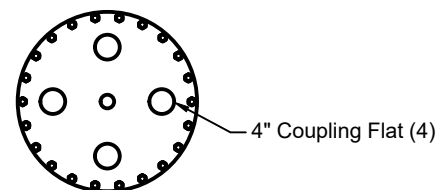


FRONT VIEW



24"-30"-36" Optional Manhole with or with out fittings  
42" SW Collar Optional

42" / 48"	SW (Single Wall)	Collar optional
42" / 48"	Square	Collar optional



TOP VIEW V-1

INSIDE DIMENTIONS		MATERIALS THICKNESS	
TANK LENGHT	32'	SHELL	1/4"
TANK DIAMETER	8'	HEADS	1/4"
A	3" Coupling W/ 2"Dialectic Bushing		Primary
B	5" Coupling W/ 4"Dialectic Bushing		Primary
C	4" Threaded Lifting Lug		Primary

CUSTOMER:  
HUGHES TANK COMPANY

PROJECT:  
12K Permatank

CAPACITY: 12,032 Gallons      WEIGHT: 10,850 Lbs



NOTES:

- A. Design Pressure: Atmosferic.
- B. Design Temperature: Ambient.
- C. Exterior: Min. 100 mils FBG jacketed dual-wall Permatank®.
- D. Seal welded striker plates under all openings.
- E. All fittings to be protected for shipment.

DESIGN:

Fabricated per UL 58 specifications single wall construction.

- Air test are no less than 3 PSI and no more than 5 PSI.
- Primary tank to be tested alone. Secondary tank to be pressure tested with primary tank. This shall be accomplished by bleeding air from the primary tank to the secondary tank.

CUSTOMER APPROVAL

SIGNATURE: \_\_\_\_\_

DATE: \_\_\_\_\_

APROVED: Bobby Hughes

CHECKED: Bode Draper

DRAWN: Roosevelt Caceres